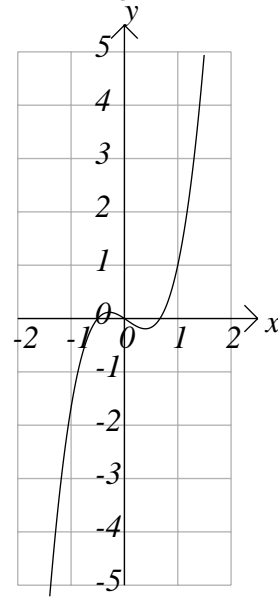




PART II

The possible answers to all questions in Part II are the letters A to J

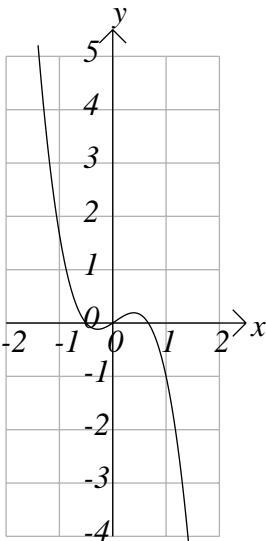
Part of the graph of $y = f(x) = x(2x + 1)(3x - 2)/3$ is shown to the right.



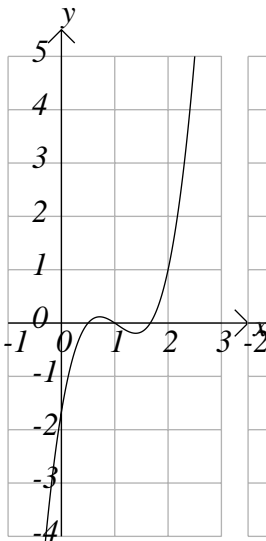
Parts of the graphs of

- (16) $y = f(x + 1)$,
- (17) $y = f(x) + 1$,
- (18) $y = f(x - 1)$,
- (19) $y = f(x) - 1$,
- (20) $y = 2f(x)$,
- (21) $y = -f(x)$,
- (22) $y = f(x)/2$,
- (23) $y = f(2x)$,
- (24) $y = -f(x) + 1$, and
- (25) $y = f(x/2)$,

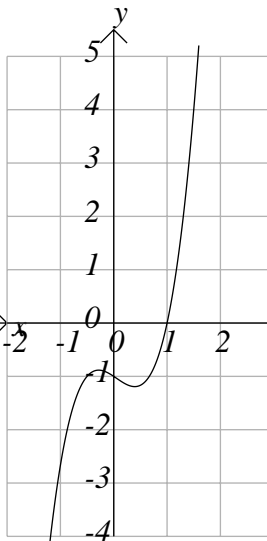
are shown below. Match them.



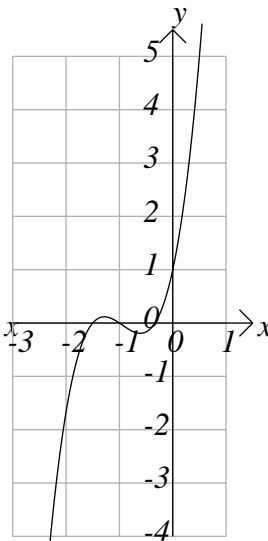
A



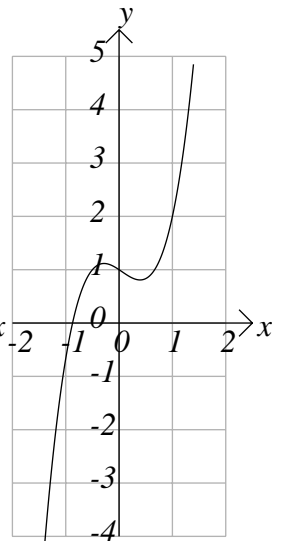
B



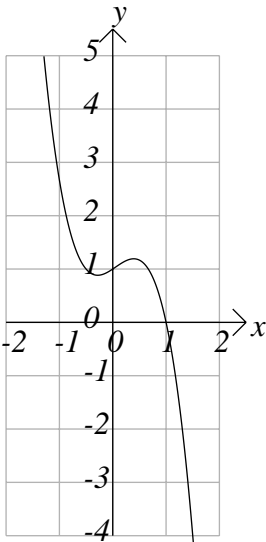
C



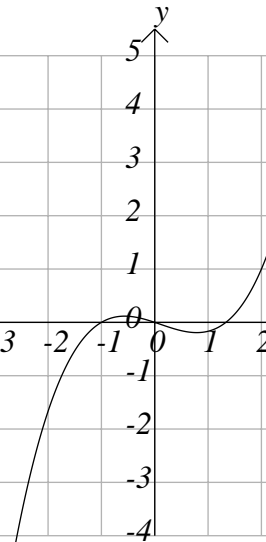
D



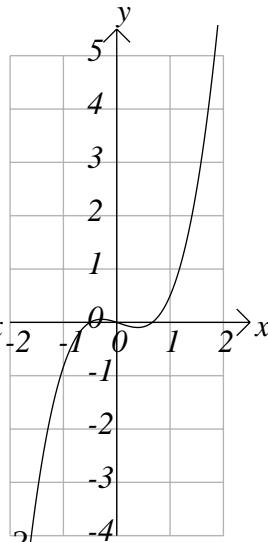
E



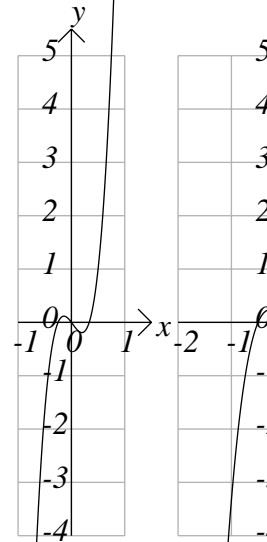
F



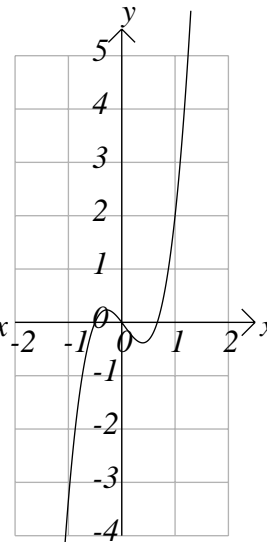
G



H



I



J