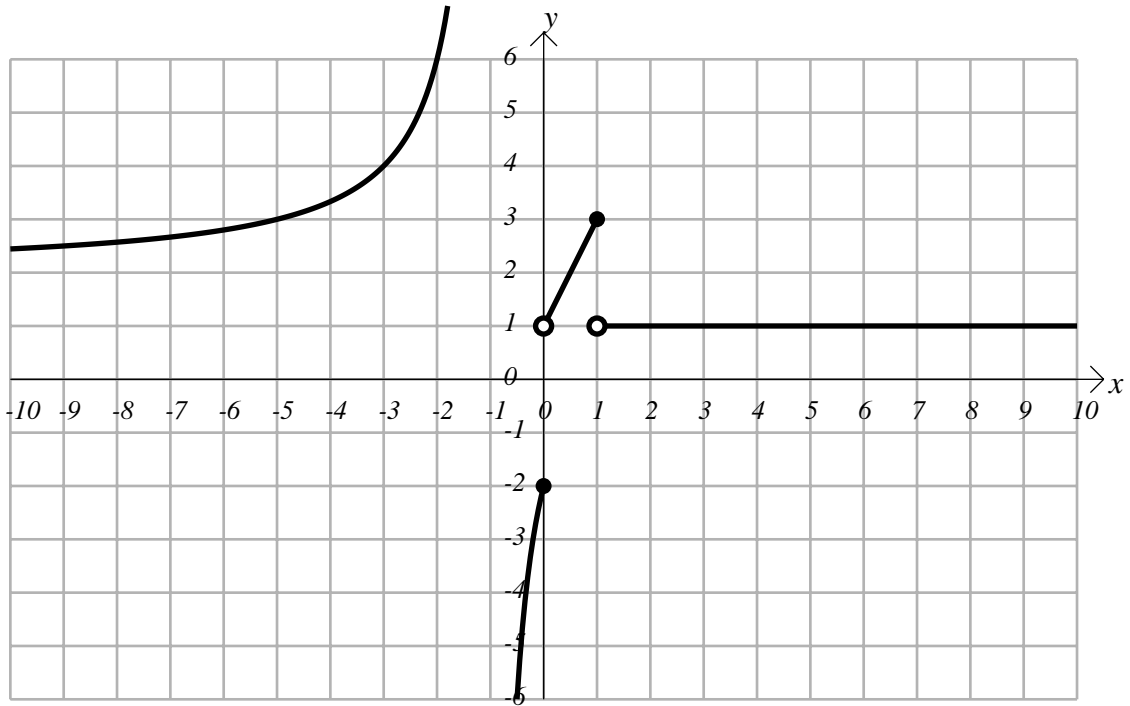


PART II

The possible answers to all questions in Part II are in the ANSWER SET:

- (A) $-\infty$ (B) -3 (C) -2 (D) -1 (E) 0 (F) 1 (G) 2 (H) 3 (I) 4 (J) ∞



Part of the graph of $y = f(x) = \begin{cases} \frac{x-3}{x+1} + 1 & \text{if } x \leq 0 \text{ and } x \neq -1 \\ 2x + 1 & \text{if } 0 < x \leq 1 \\ 1 & \text{if } 1 < x \end{cases}$ is shown above.

Find:

(13) $\lim_{x \rightarrow -\infty} f(x)$ (14) $f(-5)$ (15) $f(-3)$ (16) $\lim_{x \rightarrow -1^-} f(x)$

(17) $\lim_{x \rightarrow -1^+} f(x)$ (18) $\lim_{x \rightarrow 0^-} f(x)$ (19) $f(0)$ (20) $\lim_{x \rightarrow 0^+} f(x)$

(21) $\lim_{x \rightarrow 1^-} f(x)$ (22) $f(1)$ (23) $\lim_{x \rightarrow 1^+} f(x)$ (24) $f(2)$

(25) $\lim_{x \rightarrow \infty} f(x)$